

Be a student at OWL UAS

Application for Degree-seeking Students

■ Most of the study programs start mid-September. For further information on how to apply, please contact the International Office:

- internationaloffice@hs-owl.de
- or visit our website: www.hs-owl.de/international

Application for Exchange Students

■ Please hand in the following application documents until 1st December (for the spring semester) or 1st June (for the winter semester).

- application form for exchange students
- certificate of enrolment at home university
- "Learning Agreement"
- official academic transcripts
- resumé

For more information please contact our International Office.

International Office

■ Our International Office takes care of you every step of the way. They help you to plan your trip to Germany, to find the right accommodation, to enroll in your courses, and to manage all necessary formalities. They will ensure that you find your way around on campus and in town as well as introducing you to fellow students at welcome parties, city rallies, campus tours, and so on.

More helpful information for incoming students as well as details on scholarships as well as visa and insurance requirements can be found on our website: www.hs-owl.de/io.

Contact

Ostwestfalen-Lippe University of Applied Sciences
Liebigstraße 87
D - 32657 Lemgo
Germany

Enquiries about international partnerships:

Dr. Tatjana Nisic – Director of the International Office
Phone: +49 05261 - 702 5059
E-Mail: tatjana.nisic@hs-owl.de

Enquiries about studying at OWL UAS (Incomings):

Kerstin Rosemann
Phone: +49 5261 - 702 5836
E-Mail: internationaloffice@hs-owl.de

Web: www.hs-owl.de/io

General enquiries:

Press Relations Office
Phone: +49 5261 - 702 2510
E-Mail: pressestelle@hs-owl.de
Web: www.hs-owl.de/en/service/pressestelle

Get in touch

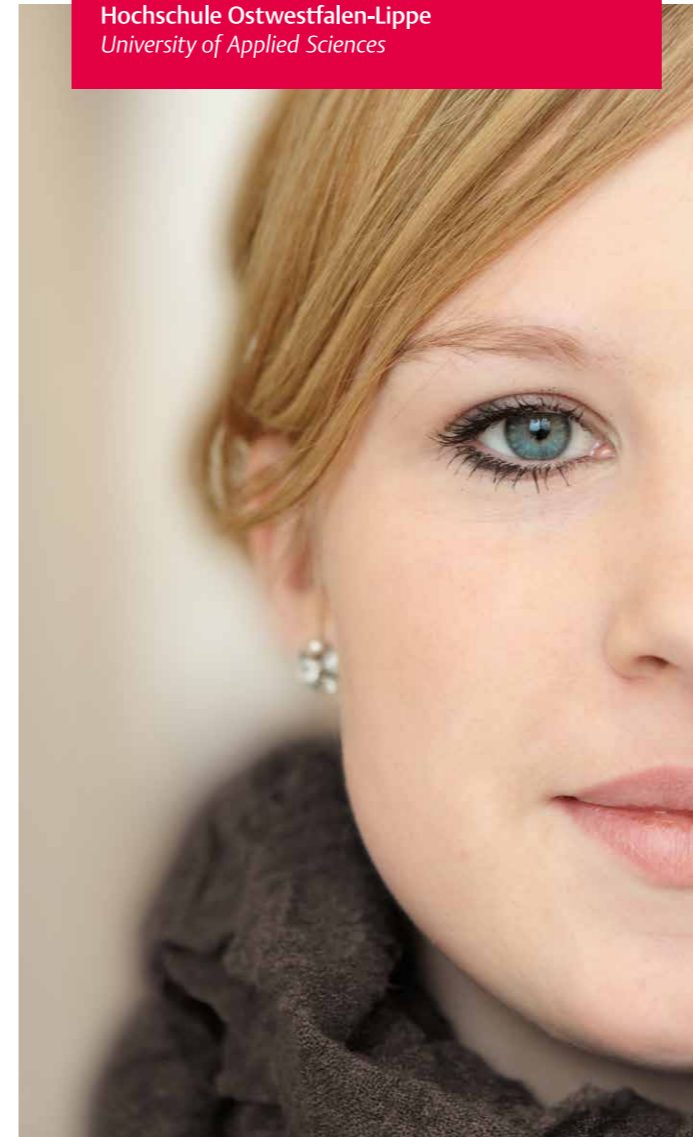


www.facebook.com/HochschuleOWL



www.youtube.com/HochschuleOWL

Hochschule Ostwestfalen-Lippe
University of Applied Sciences



■ **CAMPUSES - COURSES - CHARACTERISTICS**
OSTWESTFALEN-LIPPE UNIVERSITY AT A GLANCE

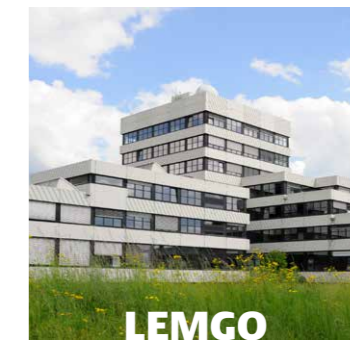
KNOWLEDGE

Four sites – one university

■ Ostwestfalen-Lippe University of Applied Sciences' (OWL UAS) goal is to tackle complex problems and global challenges and work to ensure that knowledge and innovations benefit society. We provide education and research in engineering, economics and management, life science technologies, design and construction. Almost 6,600 students, 171 professors and 460 employees are based at our campuses in Lemgo, Detmold, Höxter and Warburg.

Each campus is characterized by its courses of study: Lemgo is home to the classic engineering disciplines, supplemented by one-of-a-kind courses such as Media Production, Wood Technology and Food Technology. Detmold focuses on disciplines involving construction and design. Höxter has made a name for itself as a campus dedicated to ecological aspects in engineering. Warburg is the youngest site of the university and offers a selection of the classic engineering disciplines.

The university cooperates with nearly 100 partner universities in over 35 countries.



LEMGO



DETMOLD



HÖXTER



WARBURG

Be open-minded

■ The neighboring districts Lippe and Höxter are part of the region Ostwestfalen-Lippe. They are situated in the center of Germany between Teutoburg Forest, the Weser river and the Weser Hills. The city of Hannover is 100 kilometers to the east and Cologne is 200 kilometres to the southwest of the university. The region invites students to take part in creative recreational activities, sports and culture.

Dating back to 1190, Lemgo is one of the oldest cities in this region of Germany. Almost 1.000 years of history blend with modern knowledge and ideas. In Ostwestfalen-Lippe, you find the charm of small picturesque, cobble-stoned towns side by side with city attractions such as shopping, restaurants, nightlife and cultural events.

Strong technological and scientific medium-sized companies shape the industry. The university's excellent contacts to the local industry and businesses is the basis for innovative study programs and successful research collaborations.

Thanks to the excellent education of our graduates and the close industrial relations, Ostwestfalen-Lippe University of Applied Sciences has become an essential and indispensable part of the regional economy.






Our Degree Programs and Additional Courses

I. BACHELOR PROGRAMS

ADVANCED POWER TECHNOLOGY
APPLIED COMPUTER SCIENCE
ARCHITECTURE*
INDUSTRIAL BIOTECHNOLOGY
BUSINESS ADMINISTRATION*
CIVIL ENGINEERING*
COMPUTER ENGINEERING*
COSMETICS AND DETERGENTS TECHNOLOGY
ELECTRICAL ENGINEERING
ENVIRONMENTAL ENGINEERING
FOOD TECHNOLOGY*
INDUSTRIAL CONSTRUCTION ENGINEERING
INDUSTRIAL ENGINEERING*
INDUSTRIAL PRODUCTION OF FOOD AND ORGANIC FOOD** (DOUBLE DEGREE) 
INTERIOR DESIGN*
LANDSCAPE ARCHITECTURE
LANDSCAPING AND GREEN SPACE
LOGISTICS*
MECHANICAL ENGINEERING*
MECHATRONICS*
MEDIA PRODUCTION
MEDICAL AND HEALTH TECHNOLOGY
PHARMACEUTICAL ENGINEERING
PRODUCTION ENGINEERING*
TEACHER TRAINING FOOD TECHNOLOGY, NUTRITIONAL AND DOMESTIC SCIENCE
URBAN PLANNING
WOOD TECHNOLOGY*

II. CONSECUTIVE MASTER PROGRAMS

AUDIVISUAL ARTS COMPUTING
ELECTRICAL ENGINEERING
ENVIRONMENTAL ENGINEERING AND MODELLING
INFORMATION TECHNOLOGY (FULL-TIME / PART-TIME) 
INTEGRATED ARCHITECTURAL DESIGN 
INTERIOR ARCHITECTURE
LANDSCAPE ARCHITECTURE
LIFE SCIENCE TECHNOLOGIES
MANAGEMENT OF MEDIUM-SIZED ENTERPRISES
MECHANICAL ENGINEERING
MECHATRONIC SYSTEMS
PRODUCTION AND MANAGEMENT
PRODUCTION ENGINEERING AND MANAGEMENT (DOUBLE DEGREE) 
SUSTAINABLE BUILDING AND MANAGEMENT

III. COOPERATIVE PHD PROGRAMS

COOPERATIVE PHD PROGRAMS ARE OFFERED IN EACH OF OUR 9 DEPARTMENTS.

IV. FURTHER EDUCATION PROGRAMS / DEGREE PROGRAMS

FM • LEADING AND MANAGEMENT SKILLS
PM • PERSONALITY DEVELOPMENT AND METHODS TRAINING
LANGUAGE COURSES

* cooperative study programs
** Language of instruction: French, German
All courses are taught in German except of those with the Union Jack.

The Departments of Ostwestfalen-Lippe University

Department 1 - Detmold School of Architecture and Interior Architecture

Department 2 - Media Production

Department 3 - Civil Engineering

Department 4 - Life Science Technologies

Department 5 - Electrical Engineering and Computer Science

Department 6 - Machine Technology and Mechatronics

Department 7 - Production and Economics

Department 8 - Environmental Engineering and Applied Computer Science

Department 9 - Landscape Architecture and Environmental Planning

Facts and figures

- 6,600 students
- 171 professors
- more than 460 teaching and administrative staff
- 76 laboratories
- around 46 million euro budget in 2015 (including third-party funds)



Be prepared

■ Study programs at OWL University of Applied Sciences prepare students for national and international job markets. Practical orientation is the hallmark of studying at universities of applied sciences. At OWL University, scientific knowledge and methods are conveyed and applied in the numerous well-equipped labs. Thanks to our close cooperation with the industry, it is common for our students to carry out work placements and prepare their theses in companies. Studies are rounded off by practical semesters.

We offer a variety of extra-curriculum courses: language courses, presentation techniques, using different types of media, conflict management, and many others.

Cooperative undergraduate study programs

■ The range of courses is rounded off by so-called "cooperative study programs", initiated in collaboration with the industry. Students enrolled in cooperative programs study for four days a week and spend the fifth day in the company.

Cooperative PhD

■ Young researchers can do a cooperative doctorate in the various departments of the university within small or large research groups. They will be supervised by research-active professors of the university of applied science in cooperation with a German or a foreign university, as well as getting organisational support by the OWL Graduate Center.

